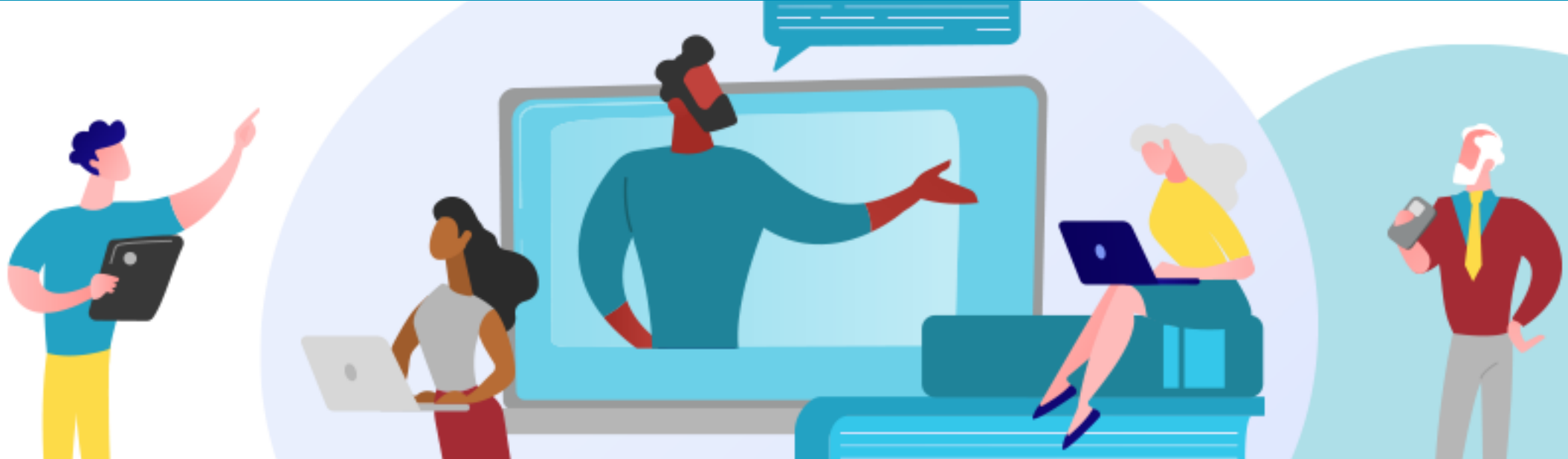


## SHIN-NY FHIR Central Services

Dheeraj Kumar Pal | Sr. Technical Lead/Architect | NYeC | [dpal@nyhealth.org](mailto:dpal@nyhealth.org) | [linkedin.com/in/dheerajpal](https://www.linkedin.com/in/dheerajpal)



HL7 FHIR DevDays 2021, Virtual Edition, June 7–10, 2021 | @HL7 | @FirelyTeam | #fhirdevdays | [www.devdays.com](http://www.devdays.com)

ORGANIZED BY



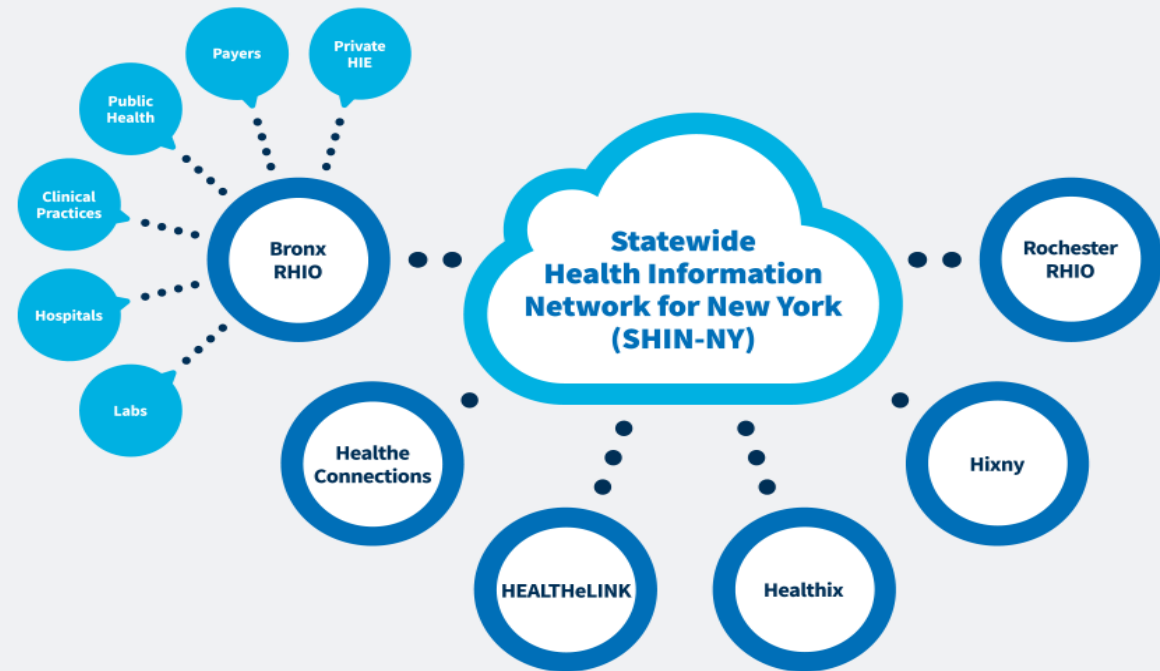
PARTNER



# Statewide FHIR Architecture in NYS


## New York State RHIO Environment

- Multiple Regional HIEs
- Various HIE Technologies
- Exchanging Documents in Clinical Viewers Since 2015
- Display of Multiple Documents



# Statewide FHIR Architecture in NYS

## IHE XCA Limitations

-  Amount of Data and Size of Documents
-  On-Demand Document Generation
-  Multiple Failure Points
-  Weekly Testing in Production
-  Limitations for Discrete Data



# Statewide FHIR Architecture in NYS

## FHIR Framework Implementation

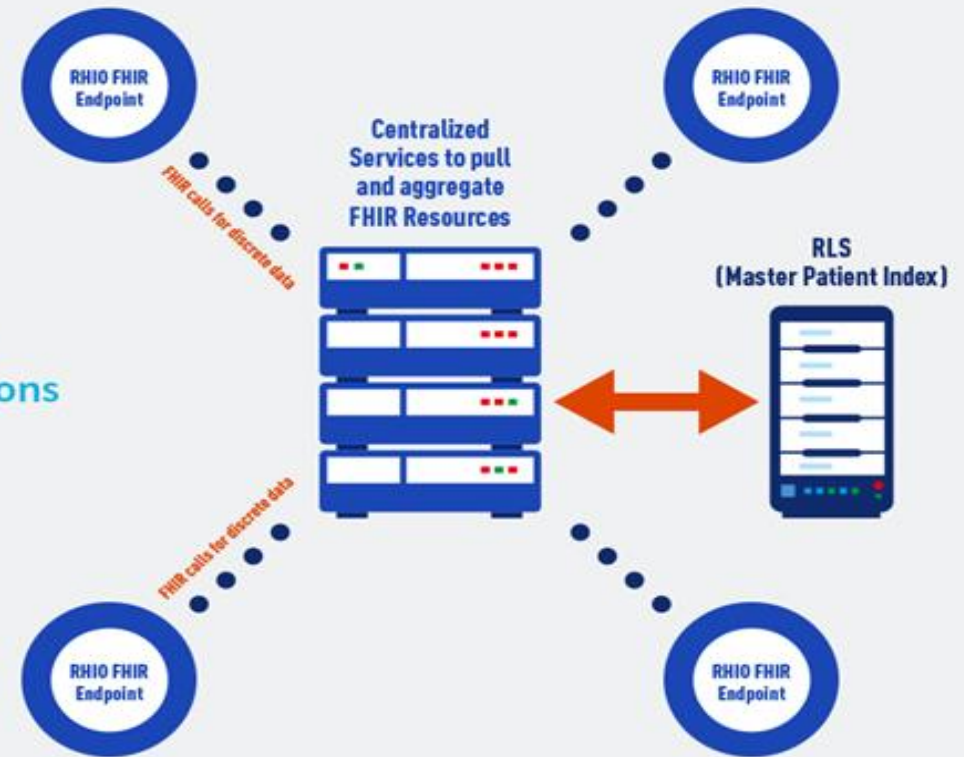


**RHIO FHIR Endpoints**



**Centralized Service**

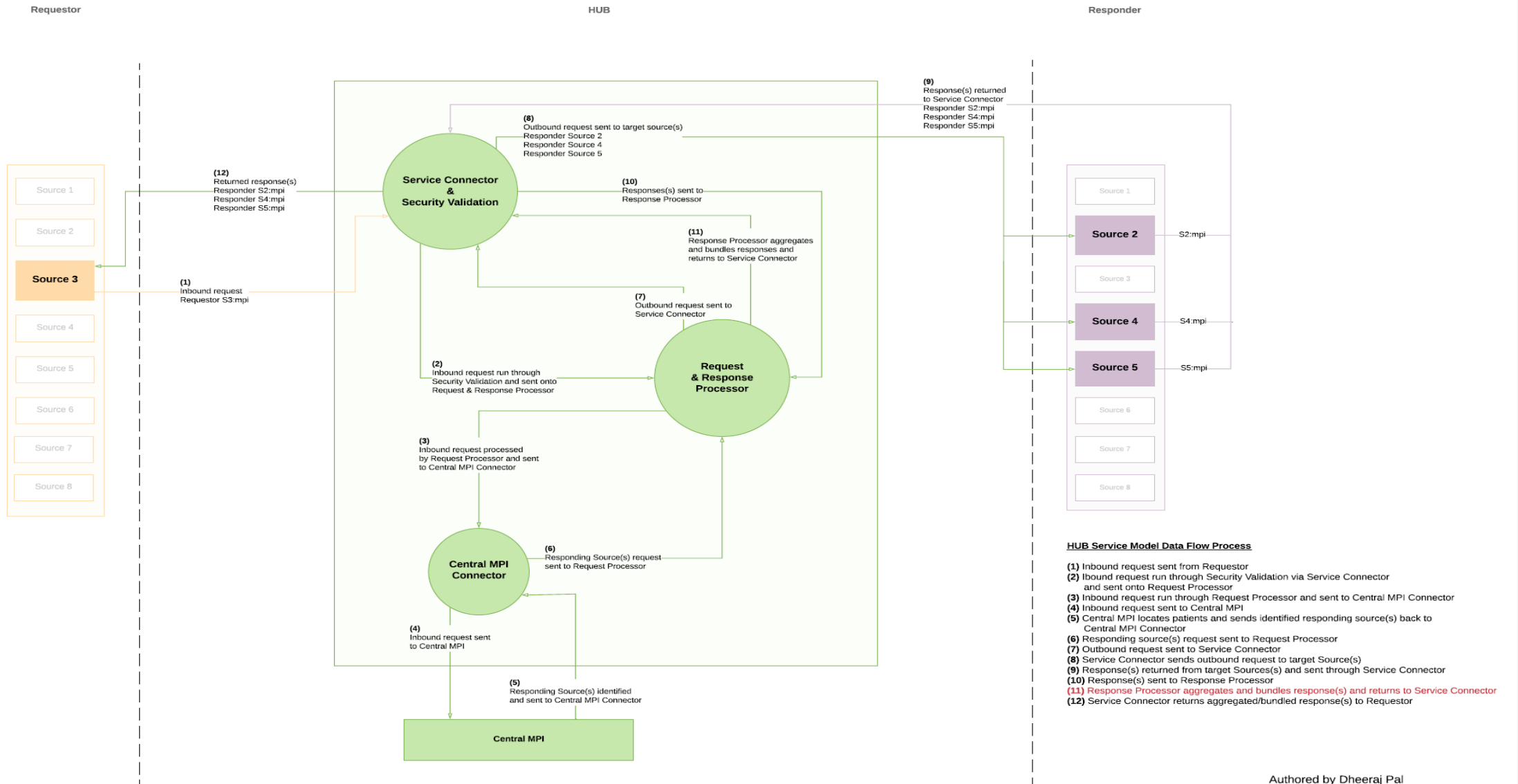
- Utilized existing RLS service
- Bundles FHIR resources from multiple endpoints
- Control endpoints and variations in implementations



## Statewide Architecture and components

- **Centralized Service:** NYeC is developing a FHIR centralized service (FCS) designed to connect a network of networks across NYS.
- **Statewide Master Patient Integration:** FCS is integrated with the statewide Master Patient index (statewide patient record lookup) to discover the patient identifier and related sources to pull required clinical data across the network.
- **Data from single/multiple targets:** FCS has the capability to pull data from a single or multiple targets based on the FHIR query parameters and Master Patient index result.
- **Security:** Currently the FCS API is open to a trusted network and is designed to be available to the internet (via a registration process using OAuth implementation).

**FHIR HUB Service Model**



# FHIR-based IHE Architecture Challenges

- **Regional Policies**
- **Response aggregation from multiple sources**
- **Multiple FHIR Version**
- **Page link consolidation**
- **Narrative consolidation**
- **Data quality**
- **FHIR Standard changes**

## Contact

- During DevDays, you can find / reach me here:
  - Via Whova App – Speaker’s Gallery
  - Email: [dpal@nyehealth.org](mailto:dpal@nyehealth.org)
  - Twitter : [@PalDheeraj114](https://twitter.com/PalDheeraj114)
  - LinkedIn : [\*\*linkedin.com/in/dheerajpal\*\*](https://www.linkedin.com/in/dheerajpal)



# Q&A

?

ORGANIZED BY



PARTNER

