

Show Me Where it Hurts.
Developing a SMART on FHIR Pain Dashboard in Salesforce
Victor Vargas Reyes, UCSF SOM Tech



HL7 FHIR DevDays 2020, Virtual Edition US, June 15–18, 2020 | @HL7 @FirelyTeam | #fhirdevdays | www.devdays.com/us

About SOM Tech



Broad technology expertise



Deep knowledge of the UCSF ecosystem



Human-centered approach

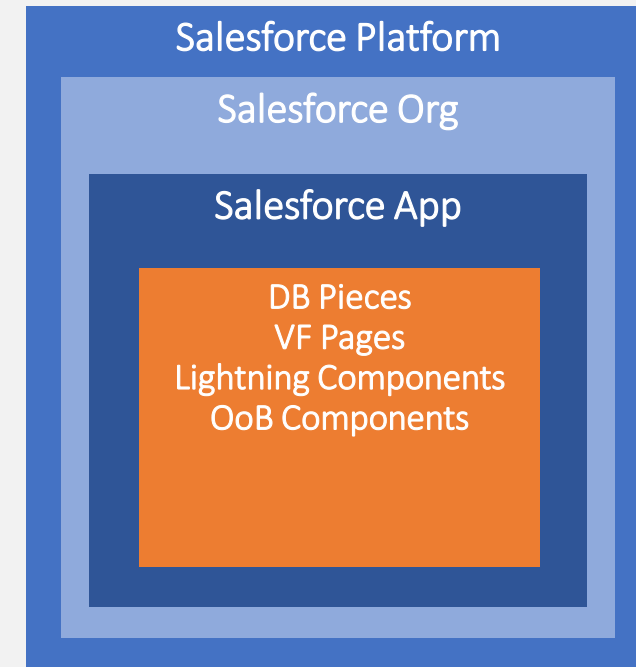
SOM Tech provides leadership and advocacy across the School of Medicine's technology spectrum, from research to product development to data security.

Agenda

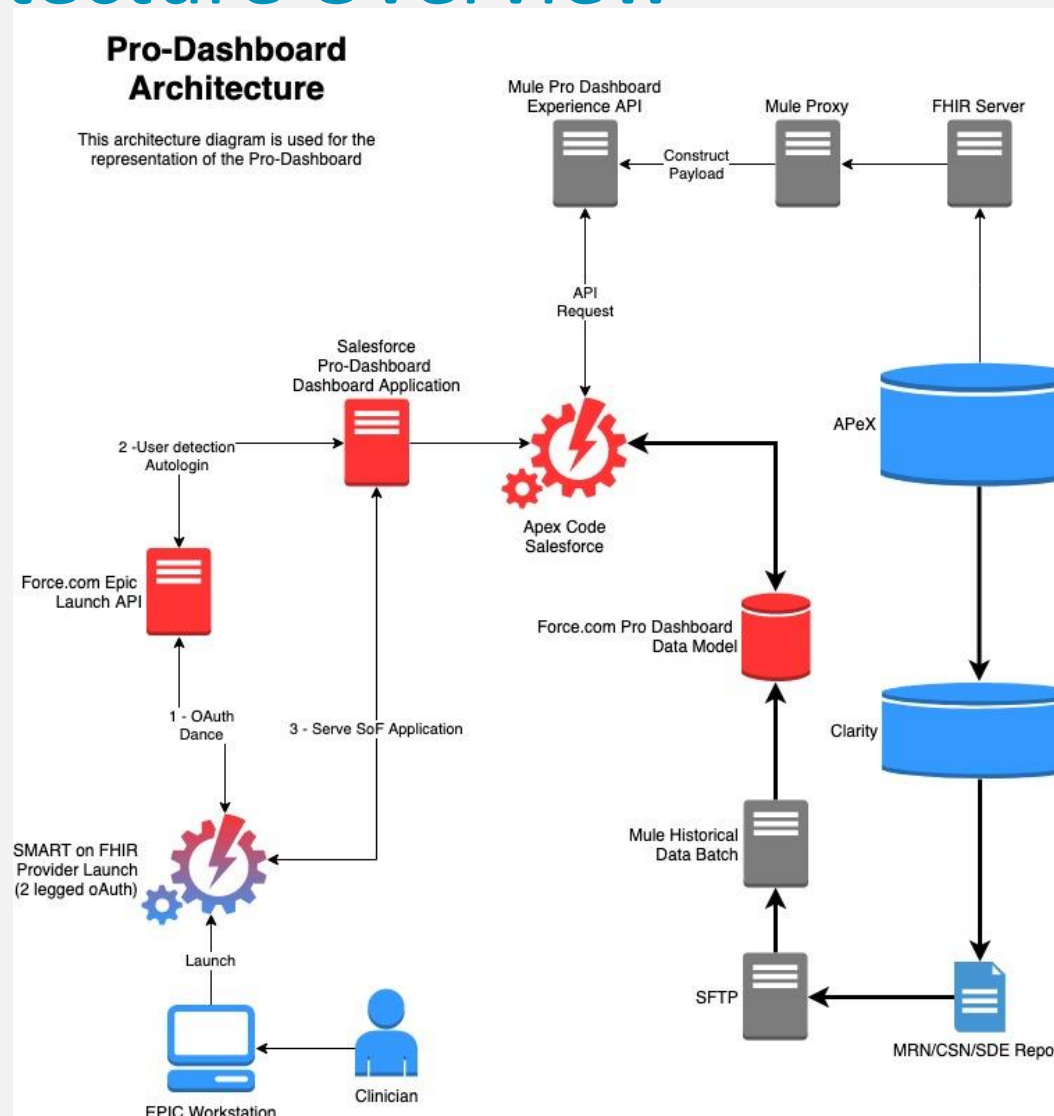
- High level Concepts of Salesforce
- High Level Architecture Overview
- Application Components
 - Epic Components (Requirements)
 - Salesforce Launch Flow
- Lessons Learned

High level Concepts of Salesforce

- Salesforce Platform
- Salesforce Org
- Salesforce Application
- Lightning, VisualForce, Out of the Box Pieces

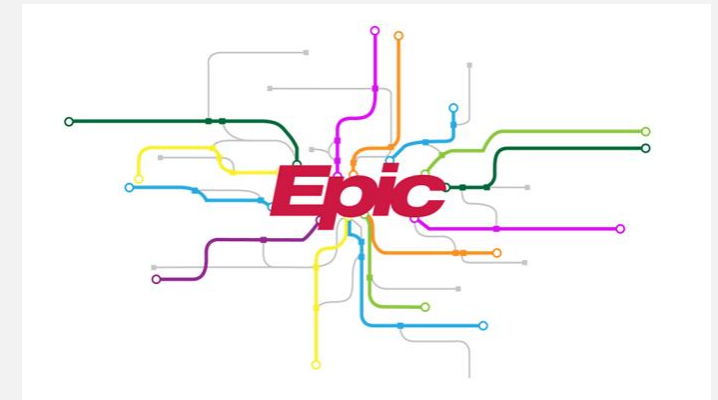


High Level Architecture Overview

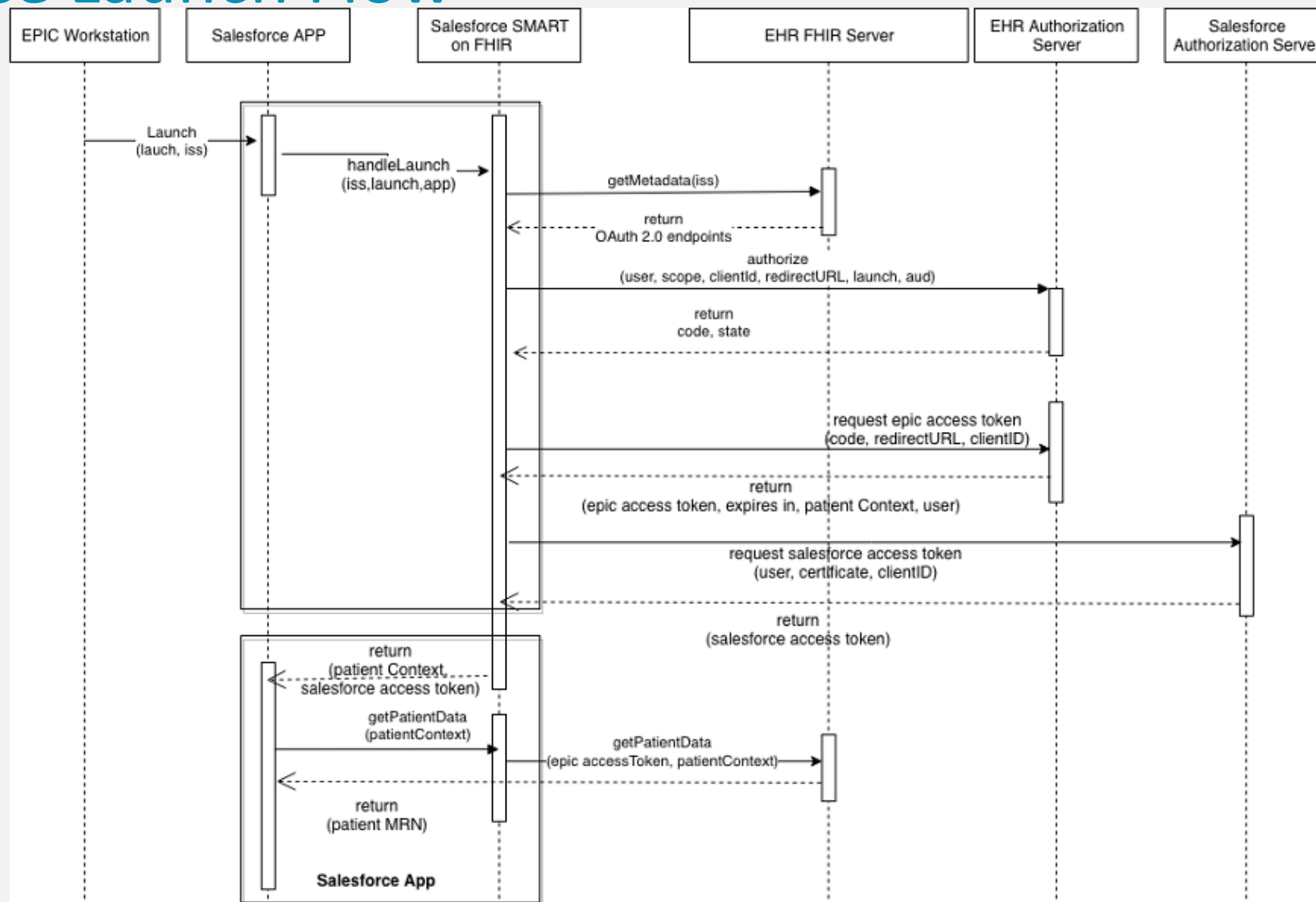


Epic Components (Requirements)

- Epic Navigator
 - Epic activities
 - Epic auto launch
- SoF (SMART Launch)
 - Provider Context (EMP ID) *
 - Patient Context (MRN)
 - Encounter Context (CSN and Date)
 - Refresh Token



Salesforce Launch Flow



Lessons Learned

- People don't like to login 2 or 3 times (Autologin - SSO)
- Use case specific test data is not always available (Labs, Medications)
- Building Experience API vs Parsing FHIR on target web app
- Make sure to test and validate all browsers for your app
- Application launch changes if launched inside a tab vs a frame

ORGANIZED BY



PARTNER



HOST SPONSOR

